



**SAP Inside Track  
BARCELONA**

# BEST PRACTICES ON CLOUD INTEGRATION

Code10 CI Accelerator | Release 2309

November 2023



Integrate Your Enterprise

# LEGAL DISCLAIMER



This document ("Document") is produced by Code-10 IT Consultants S.L. (CIF B99540254), located at Comte Borrell 194 Esc B 2-1, 08029 Barcelona, Barcelona ("Producer"). It is intended solely for the private use of the intended recipients, namely Code-10 IT Consultants S.L. (CIF B99540254) and ("Intended Recipients"). Any use, dissemination, distribution, or reproduction of this Document by persons or entities other than the Intended Recipients is strictly prohibited.

The contents contained in this Document may contain confidential, proprietary, or legally privileged information. Unauthorized disclosure of this information may result in severe legal consequences. If you are not one of the Intended Recipients and you have received this Document, please immediately notify Code-10 IT Consultants S.L. and return the Document to the Producer.

This Document is intended to be viewed and used solely by the Intended Recipients and should not be made available to any other party without the explicit written consent of the Producer. Any dissemination outside of the Intended Recipients, including but not limited to unauthorized copying or transfer of the content, is strictly forbidden.

By continuing to read or use this Document, the Intended Recipients are signifying their understanding and agreement to abide by these confidentiality and non-distribution terms.






Produced by:  
Code-10 IT Consultants S.L.  
Comte Borrell 194 Esc B 2-1  
08029 Barcelona  
Barcelona

All rights reserved. Unauthorized use, duplication or distribution is a violation of applicable laws.

# What SAP tell us to convince us to move to the Cloud



SAP BTP its a mature solution

-  Application Development and Automation
-  Extended Planning and Analysis
-  Data and Analytics
-  Integration
-  Artificial Intelligence

# What SAP tell us to convince us to move to the Cloud



SAP BTP its a mature solution

Transition to Integration Suite its gona be  
“seamless”



# What SAP tell us to convince us to move to the Cloud



SAP BTP its a mature solution

Transition to Integration Suite its gona be  
“seamless”

We have a migration tool!!



# What SAP tell us to convince us to move to the Cloud

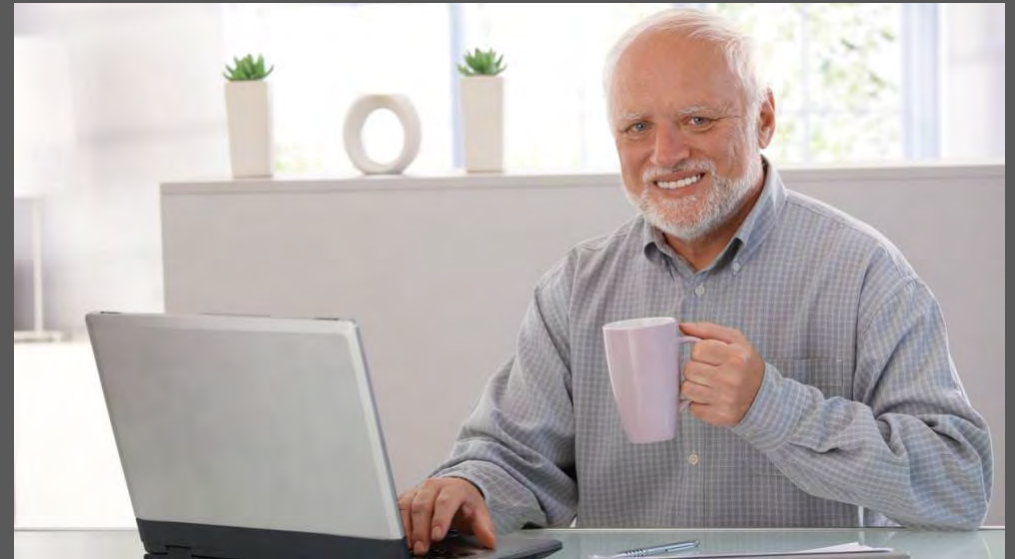


SAP BTP its a mature solution

Transition to Integration Suite its gona be “seamless”

We have a migration tool!!

We have a learning journey in Open SAP



# WHAT WE THINK ABOUT THIS



It's **time** to start your **journey** to the cloud

It's **time** to rethink your **integration strategy**

It's an **opportunity** to do the things **right**

**Migration tool** it's **NOT** an option

“**Lift & Shift**” means “**Quick & Dirty**”



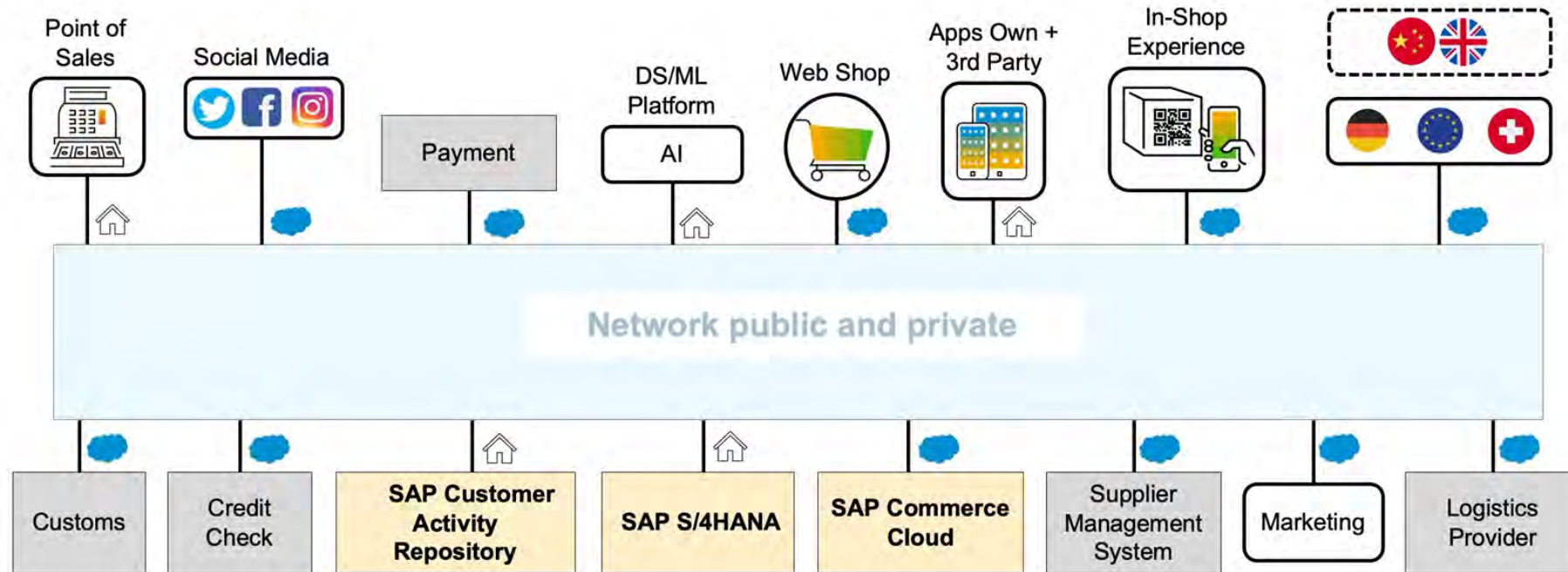
Do we really want to migrate **old school** integrations?





# INTEGRATION BASIC CONCEPTS

A **distributed IT system** comprises subsystems (components in the broadest sense) that are coupled together within the framework of a specific architecture and handle tasks cooperatively.



# INTEGRATION BASIC CONCEPTS

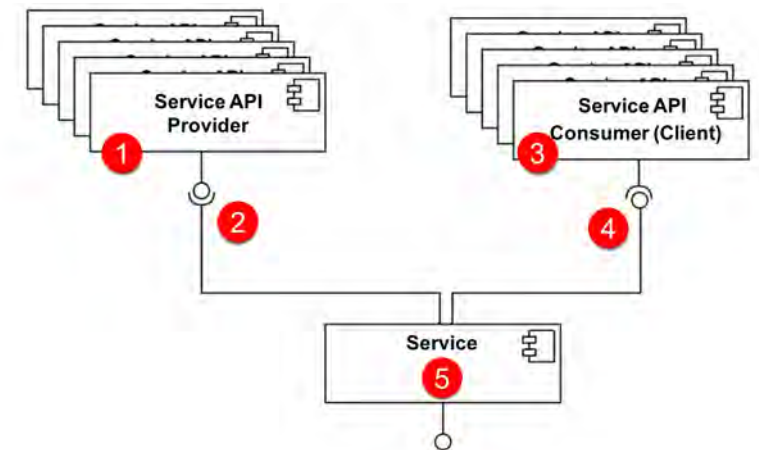
## A distributed IT landscape has the following challenges

- Many different transport and message protocols
- Release management
- Monitoring
- Error identification and correction
- Latency
- Quality of service
- Security
- Availability of implementations
- Observability
- Documentation



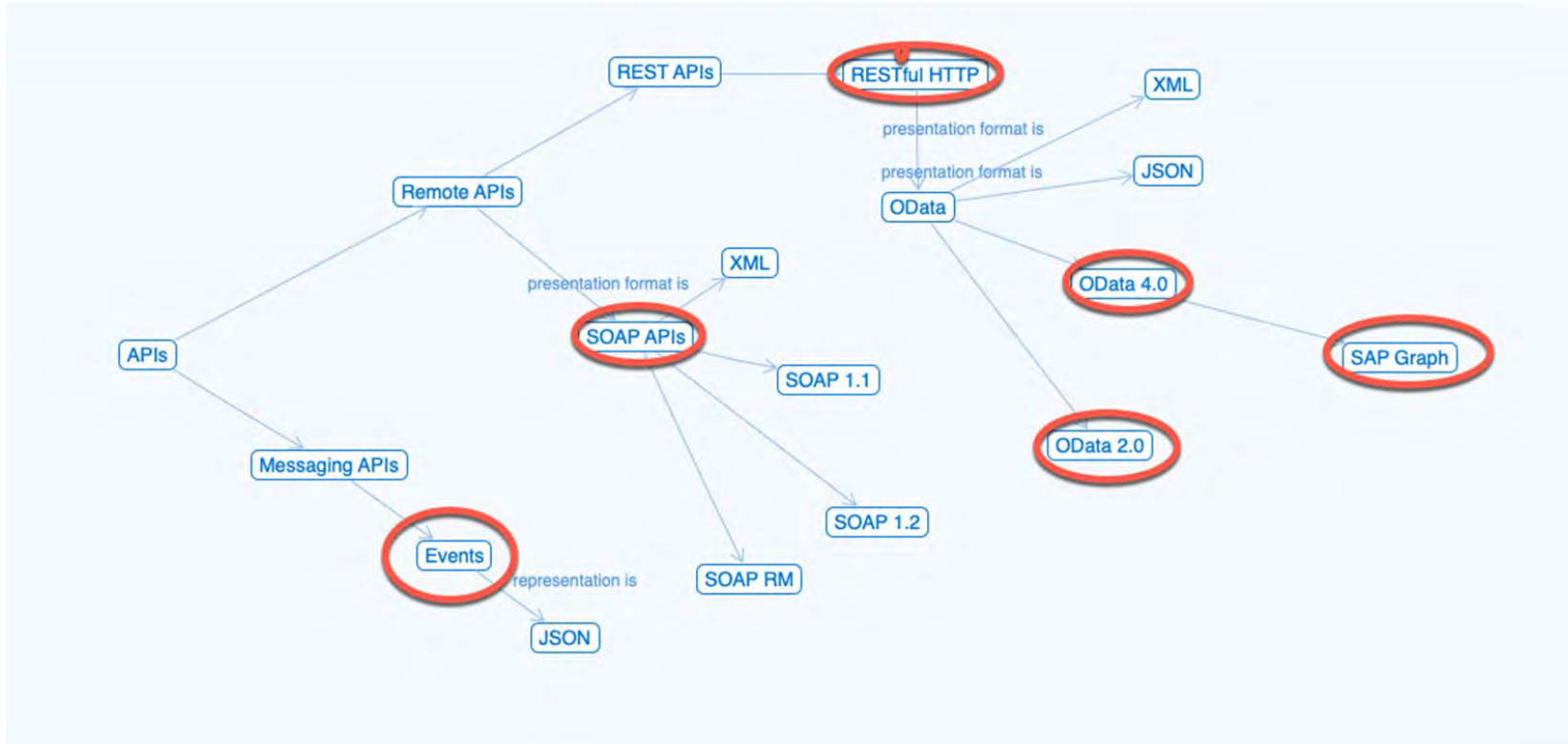
## API first approach

The API First Approach is an approach to software design that focuses on the API to create applications that can be easily connected to each other. API First creates ecosystems of applications that are modular, reusable, and extensible, such as Lego bricks.



# INTEGRATION CONCEPTS

## Main API types used in SAP



SOAP APIs, OData 2.0 and 4.0 APIs as well as SAP Graph play the leading role in the SAP universe.

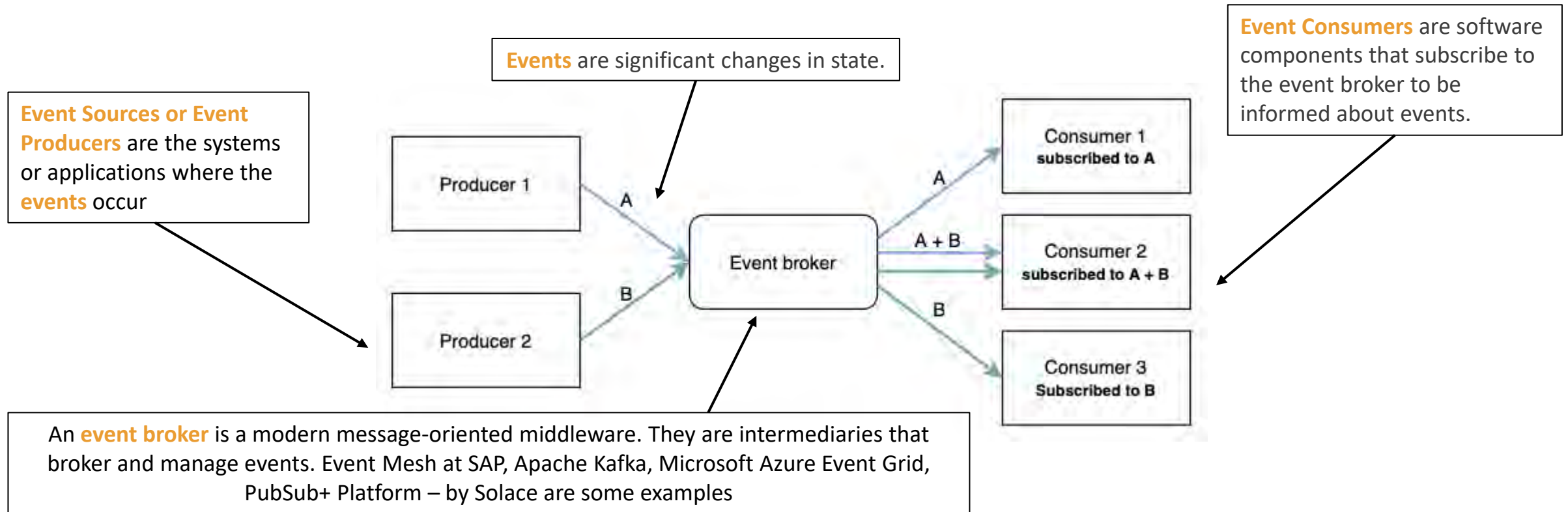
They are example of Request Driven APIs based on direct communication between a service provider and a service consumer.

Events, on the other side, are based on messages exchanged between event producer and event consumer in a decoupled way through an event broker.

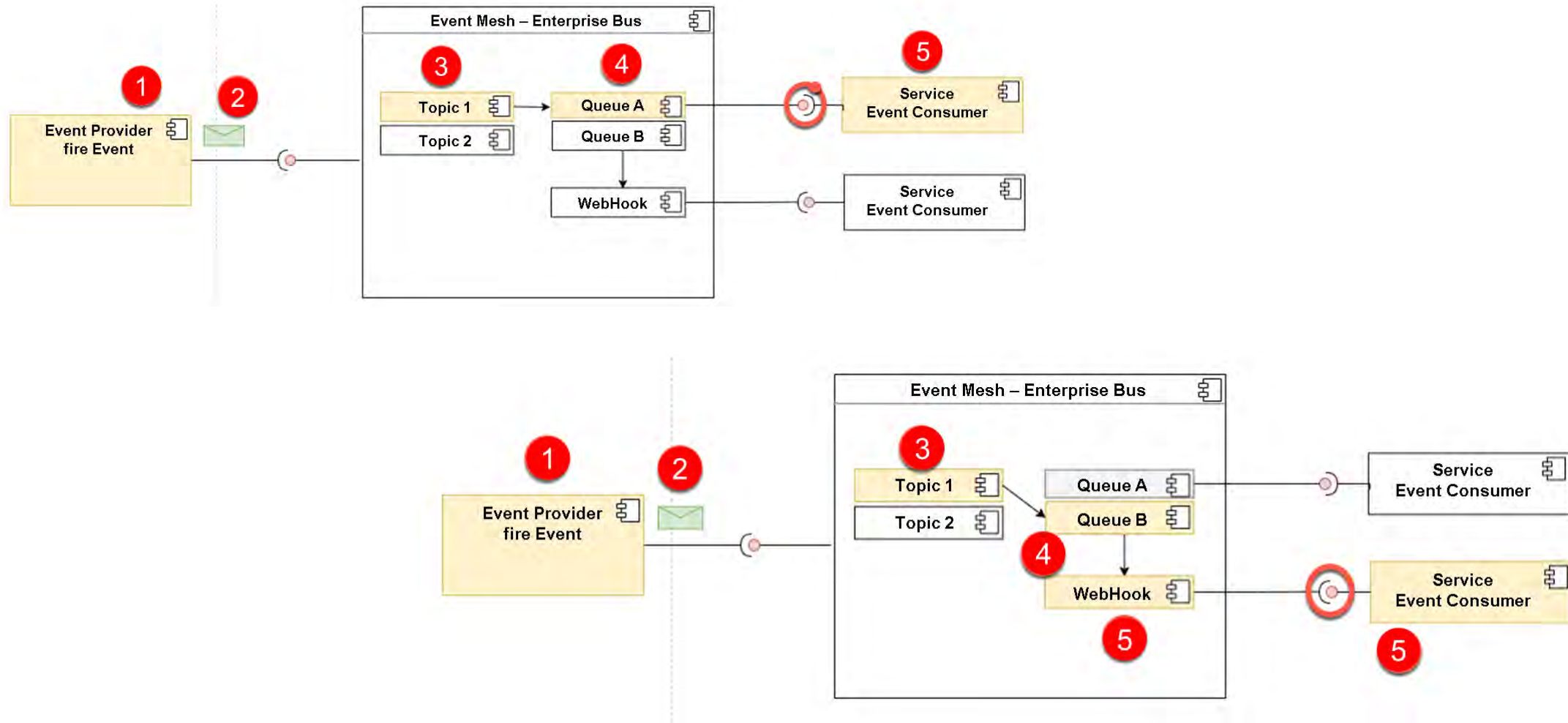
# EVENT DRIVEN ARCHITECTURE

## Event Driven Architecture

The event-driven architecture (EDA) is a software design pattern in which decoupled applications can publish and subscribe asynchronously events via an event broker.



# EVENT MESH - EXAMPLES



# INTEGRATION BASIC CONCEPTS

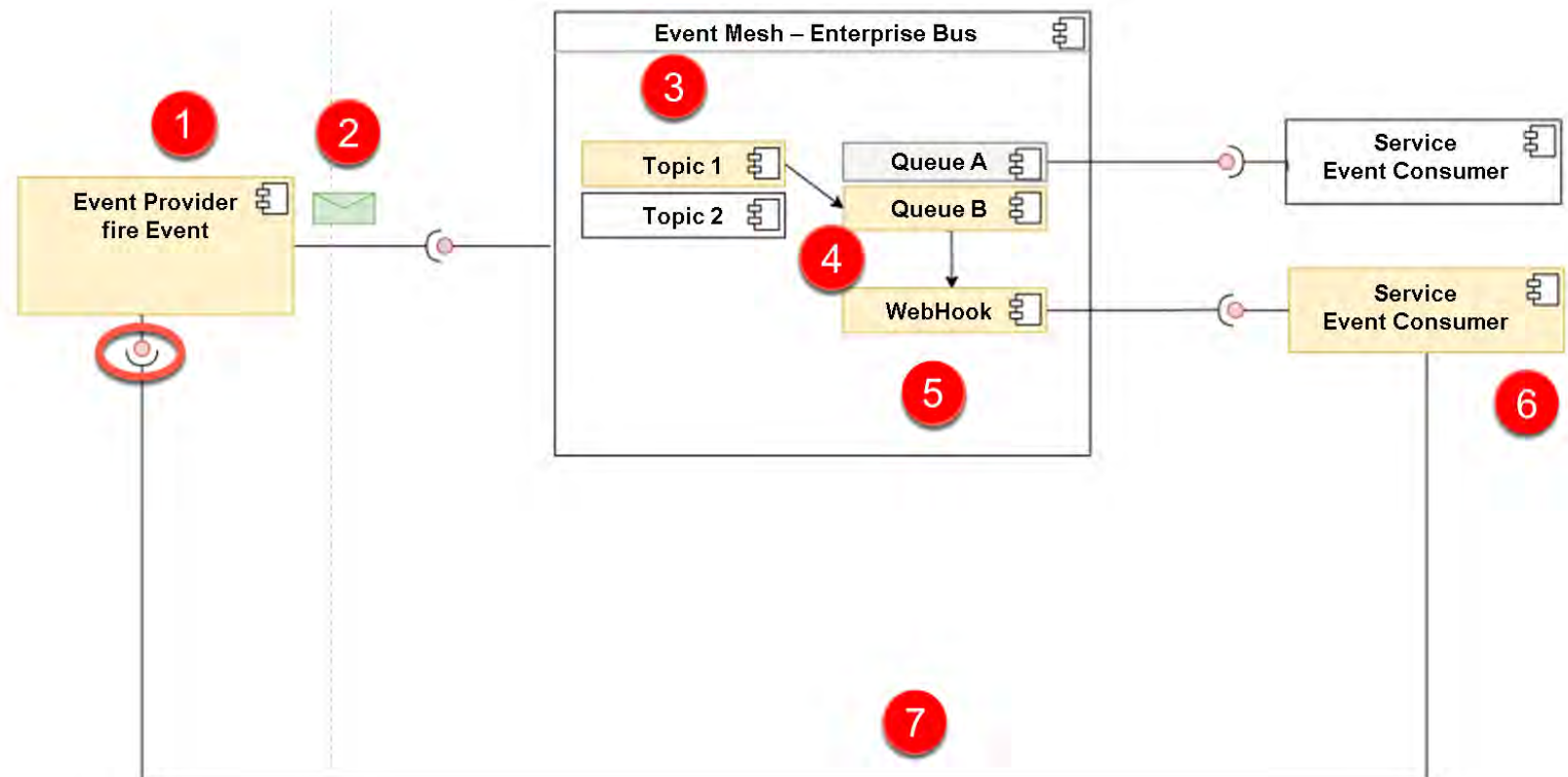
## Combination of Request Driven + Event Driven

Classic requests and events are combined in real life integrations.

For example: No. 1 to No. 6 work as described before, but what is new is that the event consumer (No. 7) submits a request to the event producer (No. 1), for example, to read the product data that has just been changed. The event consumer can then process the data set.

This example is commonly used for **Notification Events**:

- Extra Small
- Additional synchronous step required
- Controlled data access
- Suitable API needed on top of suitable event



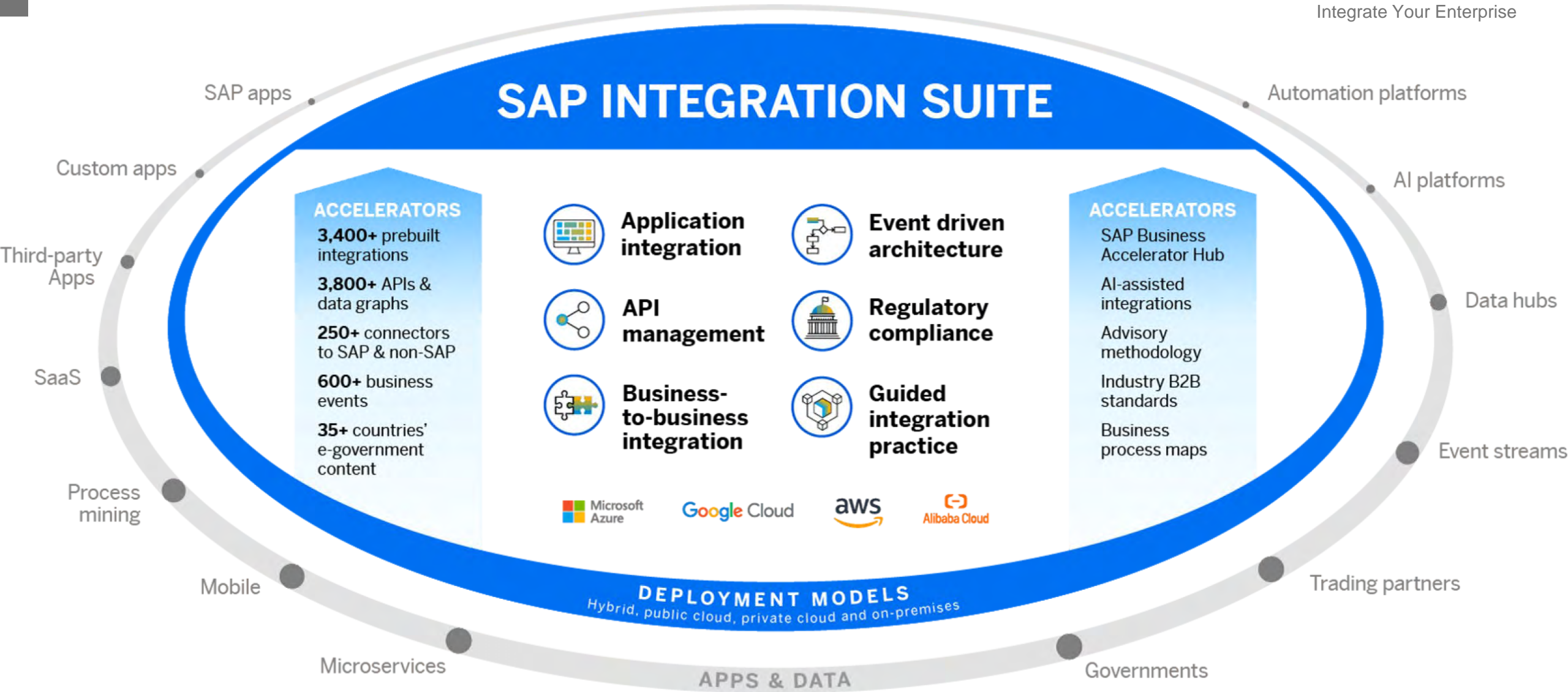
LET'S RELAX...

  
SAP Inside Track  
BARCELONA

**CODE10**  
Integrate Your Enterprise



# SAP INTEGRATION SUITE





# CODE10 CI ACCELERATOR



## Code10 CI Accelerator®

- **Speed up** your journey to the SAP Integration Suite
- **Accelerate** new developments and migrations
- **Improve quality**, error handling and monitor with 4 tier architecture and multiple developments tools.

Code10 CI Accelerator® contains multiple supporting artifacts which can put you up to speed with SAP CI integrations



## CODE10 Integration Patterns

IFlows covering **CODE10** integration patterns. Decoupling/Dispatching, Routing and Mapping templates for different cases.



## CODE10 Alerting Tools

IFlows covering different alerting or ticketing options.

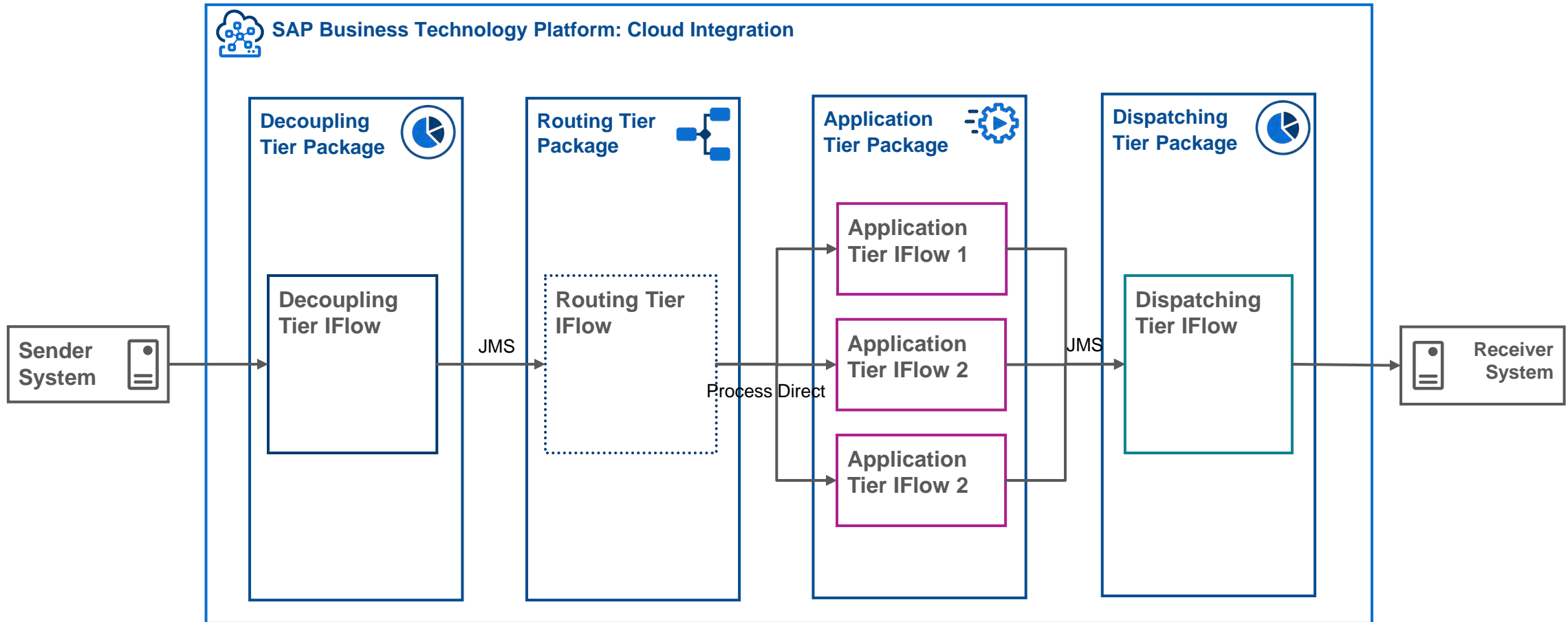


## CODE10 Toolkit

Different tools for certificate expiration check, value mapping replication or Groovy scripts with different examples (MPL store, Java Mapping execution etc.)

# CODE10 CI ACCELERATOR – INTEGRATION PATTERNS

Within our CODE10 CI Accelerator® package we propose an integration model of 4 tiers for asynchronous message processing.




Four tier architecture is suitable for most customers. However, it can be simplified or extended to comprehend canonical forms.

# CODE10 CI ACCELERATOR –ALERTING TOOLS

Within our package CODE10 CI Accelerator® we have developed several functionalities to send alerts by email, to the most popular ITIL as well as to the top market messaging apps


Our iflows are **reusable** and **exchangeable** seamlessly. They are also **customizable** to include more information as per customer request.

ITIL Tools



The ITIL Tools section displays logos for SysAid, Jira, servicenow, and zendesk. Each logo is presented in its characteristic color and font style.

Messaging Tools







The Messaging Tools section displays logos for Microsoft Teams, WhatsApp, and slack. The Microsoft Teams logo is blue, WhatsApp is green, and slack is multi-colored.

**And more to come!**

# CODE10 CI ACCELERATOR – INTEGRATION TOOLS



Within our package CODE10 CI Accelerator® we have developed several functionalities to speed up integrations. They are **reusable** and **exchangeable** seamlessly. They are also **customizable** to include more information as per customer request.

Integration Tools 		
<p><b>Monitor Certificate Expiration</b> Notifies about certificates that are about to expire using any of the alerting capabilities available in our package</p>	<p><b>Monitoring Report</b> Generates a report with message processing status in a requested time range</p>	<p><b>Manage Value mappings</b> Allows to automatize Value Mapping creation, update and transport</p>
<p><b>Notify IDOC Status (SYSTAT01)</b> Reports back technical status of an IDoc to Sender SAP System</p>	<p><b>Groovy Scripts Library</b> 30+ <b>Groovy</b> scripts covering common topics ready to be reused and useful UDF function examples</p>	<p><b>Integration artifacts backup</b> Downloads the integration artifacts (iflows, Value Mappings, etc...) and stores them in the repository of your choice</p>
<p><b>Event Dispatcher</b> Custom event dispatcher iflow to handle Event Mesh events to different topics</p>	<p><b>Integrations with file servers and repositories</b></p> <p>  </p>	<p><b>Other tools like</b> JMS Queues Health check, Credentials maintenance in bulk; Log Files export, datastore cleanup and more!</p>

# ROADMAP



In future releases we will incorporate new tools and functionalities:

## - **Integration Dashboard**

We are developing and integration dashboard leveraging SAP Integration Suite APIs to offer a better administration experience to Cloud Integration.

## - **Resource Centre**

We will offer access to a resource centre with how to use our integration patterns, configure API Management and Open Connectors together with development tips.

## - **New tools and functionalities**

We are working in offering new tools and enhanced functionalities for our integration patterns. For example, integrations with other BTP services like SAP BTP DMS, integrations with Yammer (Viva engage) and other Microsoft tools.

# WHY CODE10 CI ACCELERATOR?



Our product isn't just a tool, it's a partner. It delivers a strategic approach to migration and development, making the most of the SAP Cloud Integration platform's capabilities. Start your journey to the Cloud now, with Code10 CI Accelerator.



## QUICK ADOPTION

SAP Cloud Integration Architecture definition can take up to **6 months**

With CODE10 integration tools you will have a out-of-the-box architecture interface patterns, reusable IFlows and standard naming conventions in 2 weeks.



## FASTER MIGRATION

Thanks to the reusable artifacts and scripts available within the package you can

- Speed up the Go To Market up to **10 times**
- Save **10x** the cost of a migration project



## SIMPLIFIED DEVELOPMENT



# SAP Inside Track BARCELONA

**CODE10**

Integrate Your Enterprise



[info@code10it.com](mailto:info@code10it.com)

[Luis.gomez@code10it.com](mailto:Luis.gomez@code10it.com)

[Antonio.Valladares@code10it.com](mailto:Antonio.Valladares@code10it.com)



[www.code10it.com](http://www.code10it.com)